

# 上海喀露蓝科技有限公司

Shanghai Caerulum Pharma Discovery

# Content

About Us

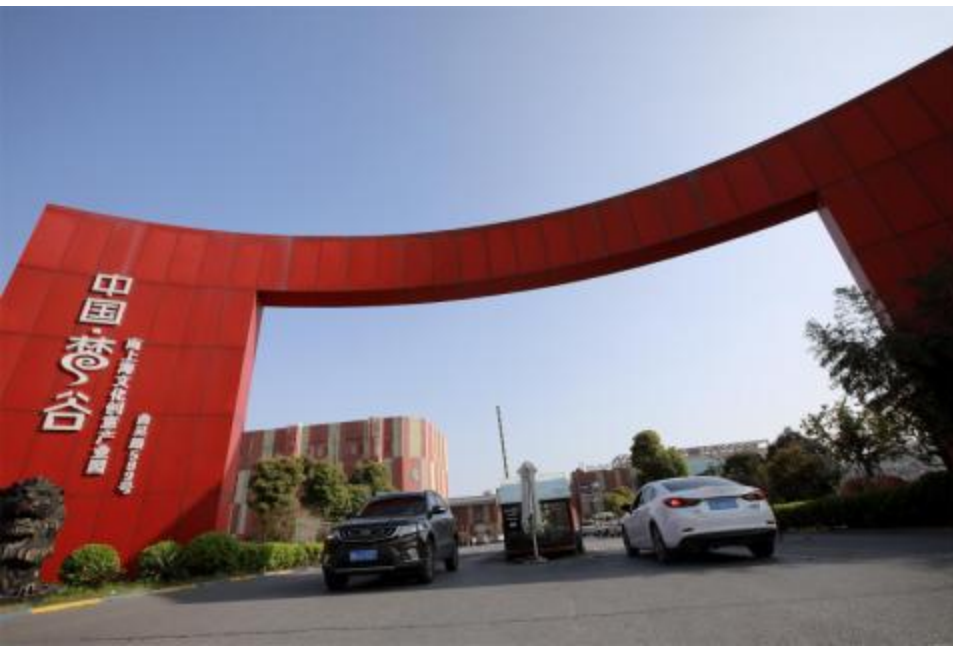
Chemical Services

Biological Services

# About Us

# About Us

From the humble set up of one laboratory in 2012, Caerulum now consists of 5 standard laboratories and 2 pilot laboratories focused on chemical compound production, one DMPK lab and one analysis room occupying a space of over 1000m<sup>2</sup> located within a beautifully landscaped innovative compound just 30km from the city center of Shanghai.



# About Us

## Our Labs

- \* 5 Standard
- \* 2 Pilot
- \* 1 Analysis
- \* 1 DMPK
- \* Biology Site (Sichuan Chengdu)

## Our Team

- \* 1 PhD in Chemistry
- \* 2 PhD in Biology
- \* 15 Chemists
- \* 2 Bioanalysts
- \* 5 Customer Service
- \* 2 QA/QC
- \* 2 Finance
- \* 2 HR & Administration





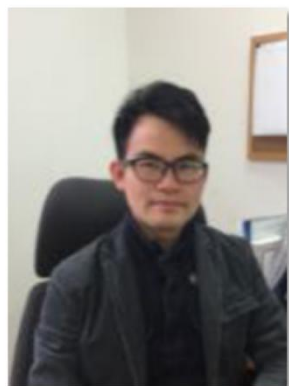
Kyna Chan (陈克燕)  
General Manager



Shuowen Wang (王硕文)  
Deputy General Manager



Dr. Aishen Gong (宫爱申)  
Head of DMPK  
• Department Manager, Biological Evaluation, Haisco Pharmaceutical  
• Group Leader, DMPK & Toxicology, Shanghai Hengrui Medicine

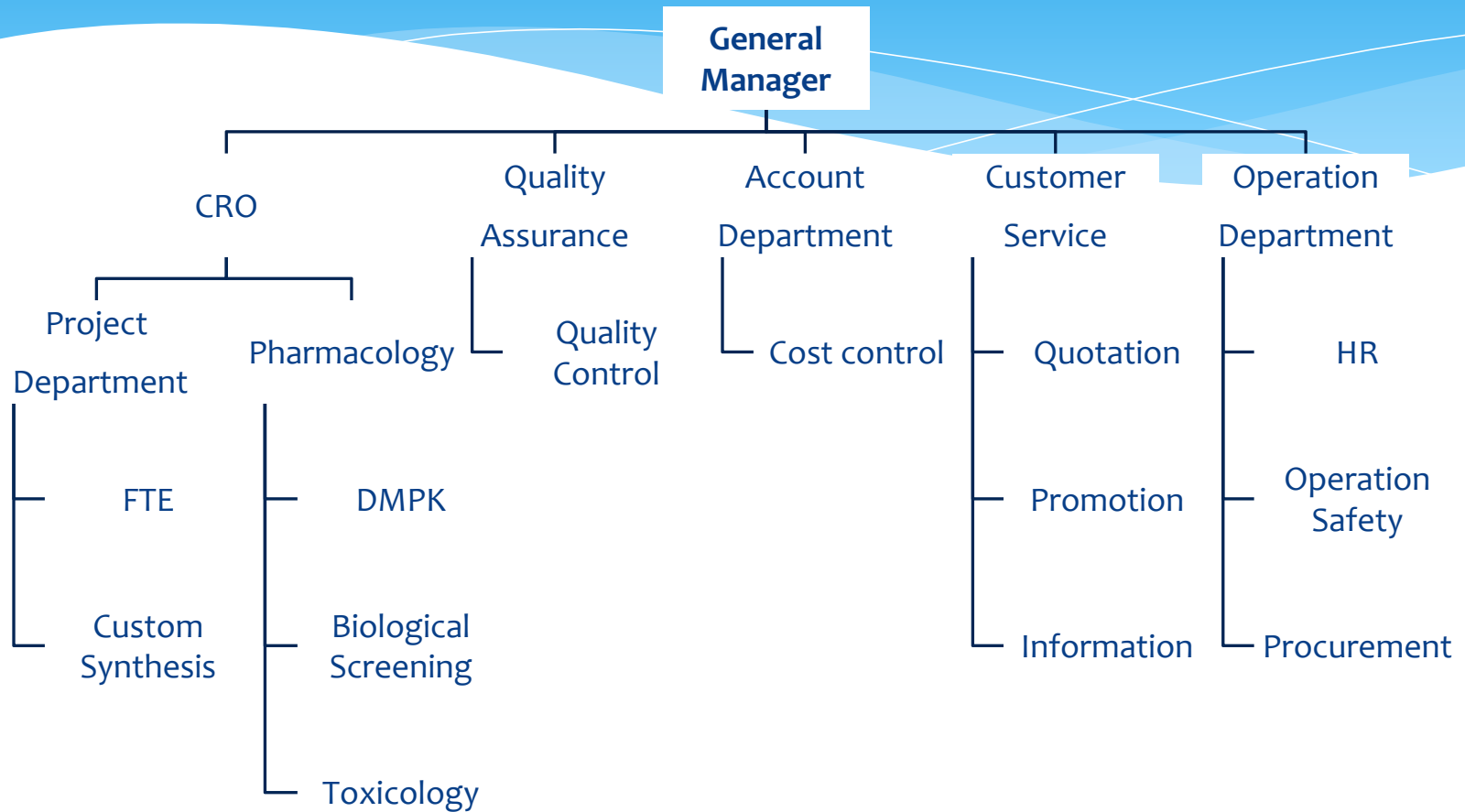


Dr. Qixian Lin (林其先)  
Head of Chemistry  
• Group Leader, Medicinal Chemistry, Hisun Pharmaceutical  
• Postdoctoral Research Associate, Medicinal Chemistry, Dartmouth College, New Hampshire, USA



Dr. Jianyu Liu (刘建余)  
Head of Biology  
• Department Manager, New Drug Screening, Haisco Pharmaceutical  
• Postdoctoral Research Associate, Markey Cancer Center, University of Kentucky, USA

# Organization Chart



# Our Services

## Chemical Services

- FTE Project
- Custom Synthesis
- Compound Supply

## Biological Services

- DMPK
- Biological screening
- Toxicology

Our services



# Chemical Services

# Customized Services

Dedicated technical team and equipment

Strict SOP for safe production and quality assurance

Detailed weekly report and original data for new drug application

Real-time CCTV system

Strict confidentiality

# Standard Laboratory



# Pilot Laboratory



# In House QC Equipments





# Storage



Clockwise from the left: 1) Stocks cabinet, 2) Solvent cabinet, 3) Special reagents



# List of Equipments

Equipment List			
Serial number	Name	Size/Model	Quantity
1	Reactor	100L	5
		50L	2
2	Multifunctional Reactor	50L	1
3	Rotary Evaporator	20L	6
		1L	3
4	Low temperature circulation Pump	DLSB-5L/20℃	1
		DLSB-5L/-25℃	1
		DLSB-10L/-25℃	8
		DLSB-20L/30℃	1
		DLSB-30L/-30℃	1
		DLSB-30L/-30℃	1
		DLSB-50L/-40℃	1
		DLSB-30L/-40℃	4
5	High temperature circulation Pump	GSC-30	2
		50L/200℃	2
6	High and low temperature circulating pump	GDX-100L/-40℃	3
		GDX-50L/-40℃	1
7	Oil Pump	8L	1
		4L	4
		2L	1

# Production Regulation



Note: Follows strict SOP for handling starting material to final product





# Our Achievements



1 FTE client for 2 years:  
> 150 projects, 15-20 chemists



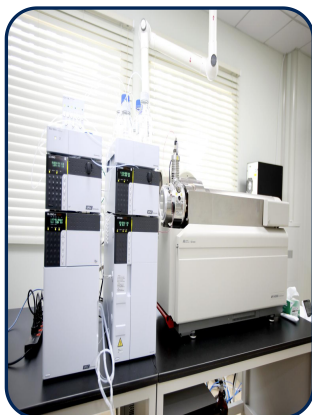
Over 10 projects:  
From optimization to scale-up  
mg  $\rightarrow$  g  $\rightarrow$  kg  $\rightarrow$  >10kg  $\rightarrow$  >100kg



Involved in discovery of 2 positive  
candidates that successfully enter  
into IND & Phase II

# Biological Services

# DMPK platform



Established in 2017

Specific functional areas:

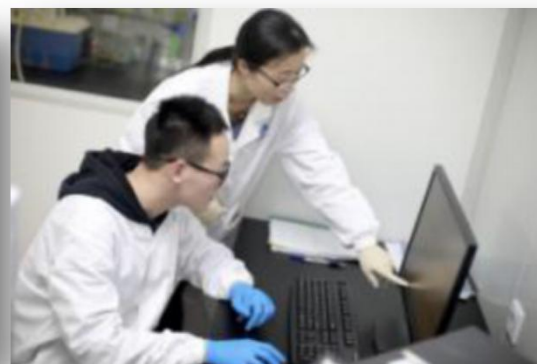
Sample reception and storage

Biological sample storage

Sample pre-treatment

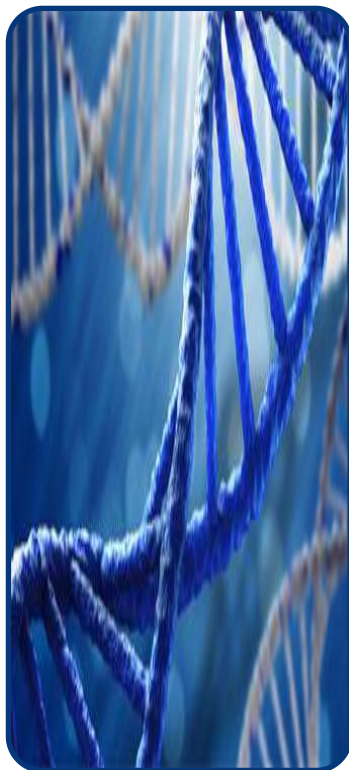
Instrument and equipment

Document management



# DMPK Services

## Specialized preclinical services for industrial and R&D facilities



- **Bioanalysis**
  - Method development/ validation
  - Quantitative analysis of various biological samples
- **In vitro ADME**
  - Metabolic stability
  - CYPs inhibition
  - Plasma & tissue protein binding
  - Solution & plasma stability
  - Metabolic profiling and species comparison (in construction)
- **In vivo ADME**
  - Quick PK screening in various species
  - Tissue distribution
  - Excretion
  - CSF sampling and BBB penetration
- **Characteristic services**
  - Technical support for preclinical development, project management and INDs

# Biological Screening & Toxicology– Xpiscoric Inc, Chengdu



## State-of-the-art laboratories

- Molecular & cellular, LC/MS/MS labs
- SPF animal facilities function as candidate compound screening
- Capability of PK/PD evaluation in large animals such as beagle dogs, mini pigs and monkeys



## Services offered:

- Technical and consulting services for biological screening
- PD/PK, pharmacology and safety of new drug R&D
- Non-GLP safety evaluations

# Our Superiority



- Extensive experience in drug discovery and development
- Professional support for R&D strategy and project management
- Flexible and effective operation pattern
- Personalized service for customer
- Capacity to provide chemistry- PD- PK- toxicology integrated services



# Key Clients





# Our vibrant and dedicated team is here to serve you better!



# Thanks for your attention